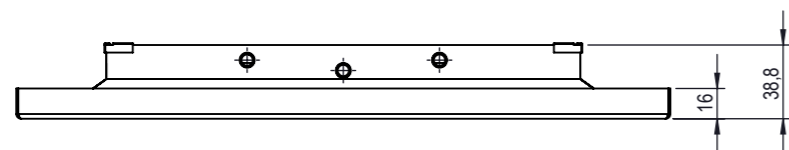
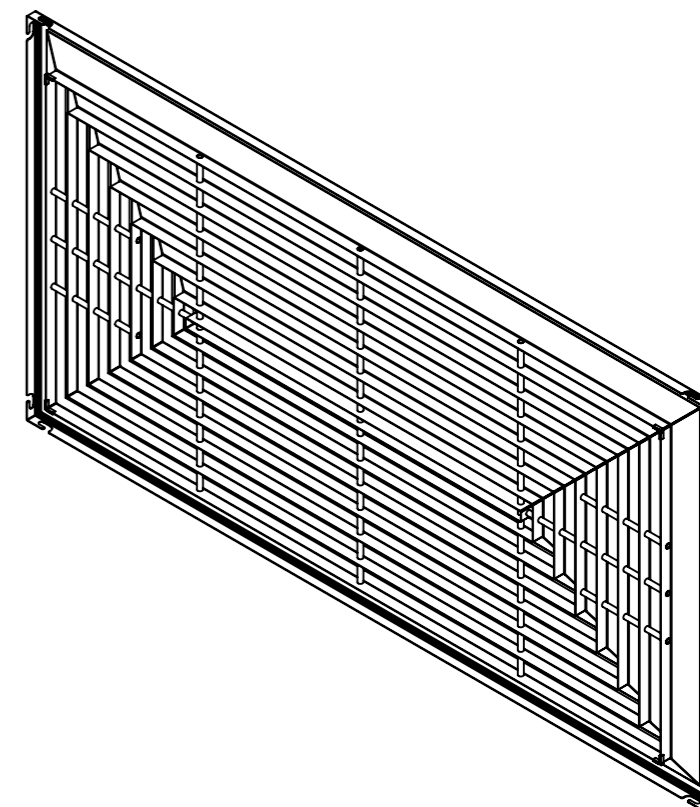
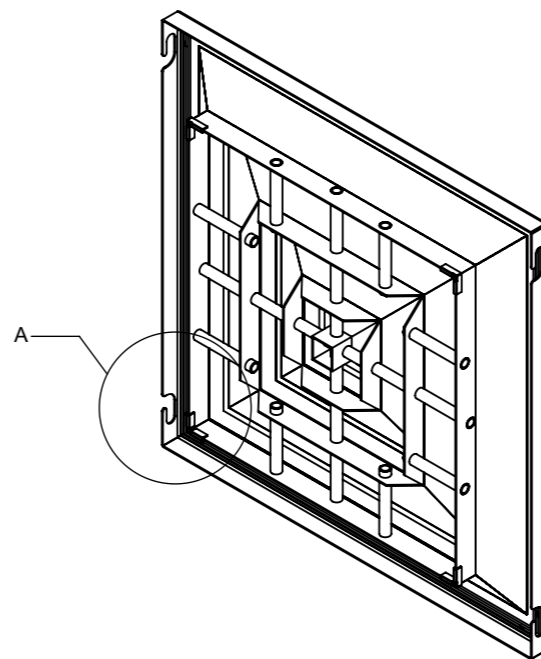
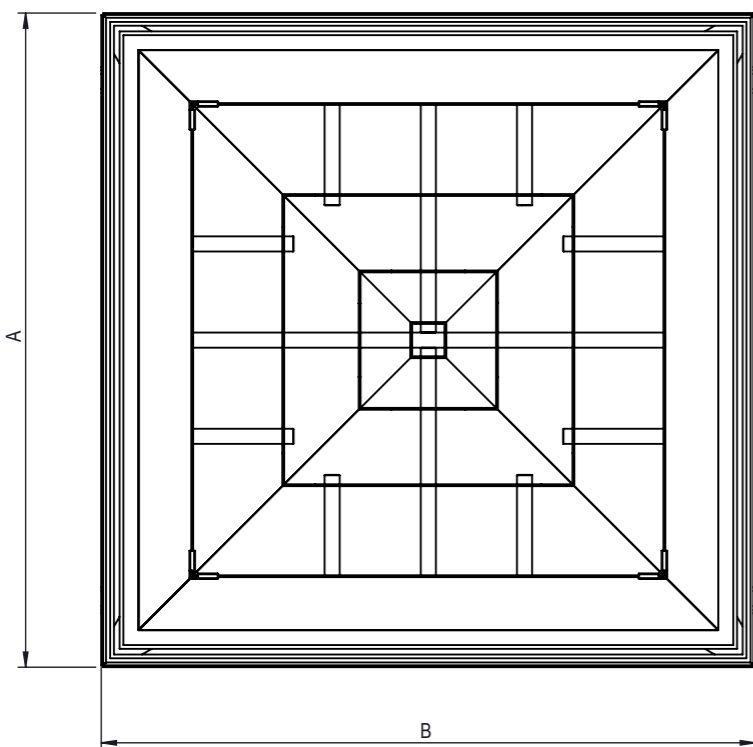
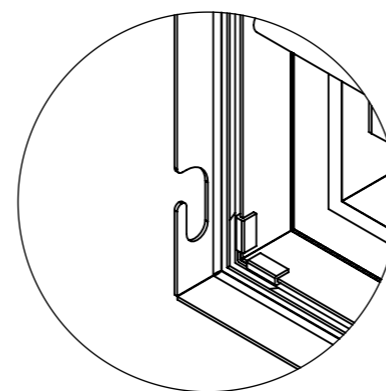


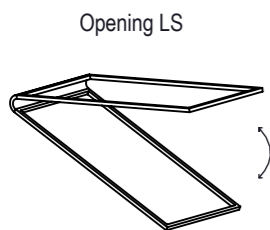
REVISION	DESCRIPTION	DATE	DESIGN	APPROVED
C	DESCRIPTION CHANGED	26.08.2019	RIL	VPA



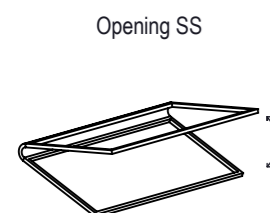
Opening SS



DETAIL A



Opening LS



Opening SS

Selection	Camfil Order Ref (EMC COMIC)	DRW	ITM	Size	Model	A	B	Thickness	Material	Mass [kg]	Opening SS	Opening LS
<input type="checkbox"/>	FV255130541	687617	687617	3P3	CSL-4W-3P3	346	346	1,5	Alu. Coated Ral 9010	2,32	-	-
<input type="checkbox"/>	FV255148611	687455	687455	3P6	CSL-4W-3P6-Clean	651	346	1,5	Alu. Coated Ral 9010	3,98	X	X
<input type="checkbox"/>	FV255130542	687618	687618	4P4	CSL-4W-4P4	498	498	1,5	Alu. Coated Ral 9010	3,72	-	-
<input type="checkbox"/>	FV255130543	687619	687619	5P5	CSL-4W-5P5-Clean	549	549	1,5	Alu. Coated Ral 9010	6,7	-	-
<input type="checkbox"/>	FV255130546	687610	687610	6P6	CSL-4W-6P6-Clean	651	651	1,5	Alu. Coated Ral 9010	8,83	-	-
<input type="checkbox"/>	FV255148645	18-104454	686274	9P6	CSL-4W-9P6-Clean	651	956	1,5	Alu. Coated Ral 9010	4,7	X	X
<input type="checkbox"/>	FV255148601	687463	687463	11P5	CSL-4W-11P5-Clean	549	1149	1,5	Alu. Coated Ral 9010	4,98	X	X
<input type="checkbox"/>	FV2551305471	687461	687461	12P6	CSL-4W-12P6-Clean	651	1261	1,5	Alu. Coated Ral 9010	6,29	X	X

- Approved
- Approved as noted
- Revise and Resubmit

NAME: \_\_\_\_\_ SIGNATURE: \_\_\_\_\_  
 COMPANY: \_\_\_\_\_ DATE: \_\_\_\_\_



DESCRIPTION Front Plate V2 for Cleanseal, Camseal 1, Camseal 2 and Pharmaseal EU 4 WAY			
PROJECT -	LAST REVISION 26.08.2019	WEIGHT	
DRAWING REF. Customer Drawing - CL V2 - 4W	SHEET 1/1	SIZE A3	

NB: The copyright of this drawing remains with Camfil. Contents must not be used, copied or disclosed to third parties without prior written consent. All rights reserved.